

Leong and Ilyumzhinov reach an agreement!

Ignatius Leong, who earlier announced that he would compete for the FIDE Presidency, has reached an agreement with Kirsan Ilyumzhinov. Paragraph 3.1 of their Agreement states: "The Presidential Ticket of Ignatius Leong shall withdraw in favour of the ticket of Kirsan Ilyumzhinov." Additional details are published at: www.fideonline.c/news.asp?id=79.

Leong's previously published MANIFESTO (*Reform for a Better FIDE*) at press-time was still available at: www.fide-reform.org.

Shirov number one on Rapid rating list

The [Rapid Ratings 20th September 2002](#) are published at the TWIC site. **GM Alexei Shirov**, who wrote an open letter a few days concerning rapid ratings, heads the list. The Top ten are: 1. Shirov 279, 2. Kasparov 279, 3. Adams 279 4. Anand 278 5. Topalov 277 6. Gelfand 277 7. Leko 275 8. Morozevich 274 9. Ivanchuk 274 10. Tkachiev 273. The rating list is accompanied by a letter by Willy Ickicki. In it he describes the current situation with rapid ratings, and points out that the tournament in Villarrobledo (where Shirov performed very well) was not counted because organisers didn't send him the tournament cross-table on time. "See you next February", says Ickicki at the end.

European Club Cup starts in Greece

43 teams (or rather 42, since the Irish team had no opponent) started doing battle in Kallithea, Halkidiki (Greece) on the 22nd of September for the

[European Club Cup](#). The Top five teams are: **NAO Chess Club** (Grischuk, Svidler, Lautier. Kramnik will not be playing), **Bosna Sarajevo** (Adams, Shirov, I.Sokolov, Movsesian, Radjabov), the current ECC champion **Norilsky Nickel** (Bareev, Dreev, Zvjaginsev, Malakhov), another Russian club **Ladia-Kazan** (Khalifman, Akopian, Baklan) and **Polonia Plus GSM** (Ivanchuk, Ju.Polgar, Krasenkow, Macieja).

As always, only Eastern Europe has showed a serious approach to the event. Germany and England this time are represented (what is already surprise!), but with no strong teams. The Netherlands is no present at all. The single relative sensation in the first round was the draw that **German Neukolln team** reached against Russian team.

ECC Round 1, September 22nd: ASA Shlomo Har-Zvi Tel-Aviv (ISR) - NAO Chess Club (FRA) 2-4, Bosna Sarajevo (BIH) - Chess Academy (GRE) 5-1, C.A. Reverte Albox (ESP) - Norilsky Nickel (RUS) 2-4, Ladia-Kazan-1000 (RUS) - Schachfreunde Neukolln (GER) 3-3, Die Klagenfurter (AUT) - Polonia Plus GSM (POL) 0,5-5,5, St-Petersburg LTG (RUS) - Rochade Eupen (BEL) 3,5-2,5, Hellir Chess Club (ISL) - Tomsk-400 (RUS) 1-5, Kiseljak (BIH) - Sollentuna Chess Club (SWE) 5-1, Corpora Lipovec (SVK) - BM Kisela Voda Skopje (MKD) 0,5-5,5, Clichy (FRA) - Arhus (DEN) 4,5-1,5, Boey Temse (BEL) - A.V.Momot Chess Club (UKR) 1,5-4,5, Danko Donbass (UKR) - Shakkikerho Taraus (FIN) 5,5-0,5, Barbican (ENG) - Beer-Sheva (ISR) 3-3, Karpaty-Galychyna (UKR) - Joensuun Shakkikerho (FIN) 4,5-1,5, Studenti (ALB) - Alkaloid Skopje (MKD) 1-5, Merkur Versicherung (AUT) - Liege (BEL) 4-2, Bristol (ENG) - NSK-SZ Rafinerija Novi Sad (YUG) 0,5-5,5, Napredak Sarajevo (BIH) - Dudelange (LUX) 5,5-0,5, Istanbul (TUR) - Zalaegerszeg (HUN) 1,5-4,5, Hapoel Cellcom Kfar-

Sava (ISR) – Randaberg (NOR) 5–1,
Cardiff (WLS) – Hohenems (AUT) 1–5,
Crumlin (IRL) Bye 3.

Annotated Game

□ **A. Finkel (2485)**

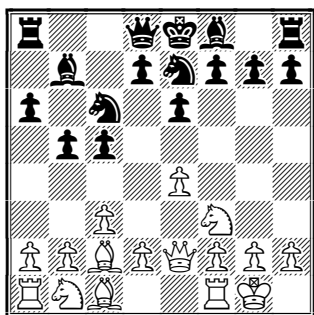
■ **I. Nataf (2560)**

*European Club Cup 2002 Halkidiki
(Greece) (1), 22.09.2002 B30*

Notes by GM Mikhail Golubev

**1.e4 c5 2.♘f3 ♘c6 3.♙b5 e6 4.0–0
♗ge7 5.c3 a6 6.♙a4 b5 7.♙c2**

This line of the Sicilian is quite topical this year over a similar line that one may see in the Ruy Lopez.
7...♙b7 8.♖e2 (D)



If 8.d4 cxd4 9.cxd4 , Black plays
9...♗b4!

8...c4!?

Two previous games where Black used this risky move can be found in the notes that follow. The usual continuations were 8...d5 9.e5 d4 10.♙e4 , as in Grishchuk–Kasparov, Moscow FIDE GP rpd 2002 (this game was commented by Vladimir Barsky in CT-574); and 8...♗g6 9.d4 cxd4 10.cxd4 ♗h4 , as in Adams–Shirov, Linares 2002 (Nataf earlier also played like this with Black).

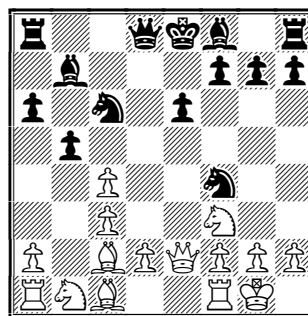
9.b3 d5

Clearly better for White was 9...cxb3?! 10.axb3 d5 11.d4 b4 12.exd5 ♖xd5 13.♞d1 ♗g6 14.♙g5 ♙e7 15.c4± in Batsanin–Smirnov, Novokuznetsk 1999

10.exd5 ♗xd5

The pawn sacrifice, of course! 10...exd5?! looks suicidal; also dangerous for Black is 10...♖xd5?! for example, 11.bxc4 bxc4 12.♗a3 ♗a5 13.♞b1 ♗g6 14.♞xb7!→

11.bxc4 ♗f4 (D)



An almost unstudied position with many possibilities for the both sides.
12.♖e4

CT editor Ruslan Sherbakov is cited as the co-author of the following cheerful game: 12.♖e3 ♙d6 13.d4 (13.cxb5!?, and Black should look for something else than the interesting, but hardly sufficient 13...♗e5 14.♗xe5 ♖g5 15.♙e4 ♖xe5 16.♙c6+ ♙xc6 17.♖xe5 ♙xe5 18.bxc6 ♗d3 19.♗a3 ♞c8 20.♗c4) 13...bxc4 14.♗bd2 ♗d5 15.♖e1 ♗xc3 16.♗xc4 ♙b4 (dubious for Black is 16...♗d5 17.♞b1! ♙b4 18.♙d2±; but 16...♗b5!?, deserved attention) 17.♙g5 ♗xd4?! (this was over optimistic; better was 17...♖c7!?) 18.♙a4+?! (and in this truly chaotic situation White missed a good chance with 18.♙xd8 ♗ce2+ 19.♞h1 ♙xe1 20.♗d6+!±) 18...♗xa4 19.♖xb4 ♗xf3+ 20.♞h1 f6! 21.♖xa4+ (21.♗d6+!?) 21...♞f7 22.♞fd1 ♙d5 23.♙f4 g5 24.♙g3 h5 25.gxf3 h4∞ , and here a draw was agreed in Batsanin–R.Sherbakov, Russian ChT (Tomsk) 2001.

12...♖c7! 13.♖e3

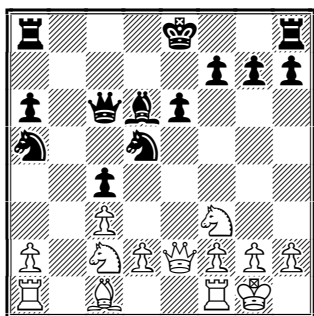
The manoeuvre ♖e2–e4–e3 is very deep, or else White was simply too late in finding Black's idea 13.d4? ♗xd4! . One way or another, now White simply returns the sacrificed pawn.

13...bxc4 14.♗a3 ♗d5

Black should have a good play, even if he loses the c4–pawn in some variations because his pieces on the light squares are placed very well!
**15.♖e2 ♗a5 16.♙a4+ ♙c6
17.♙xc6+ ♖xc6±**

And Black still retains the c–pawn too.

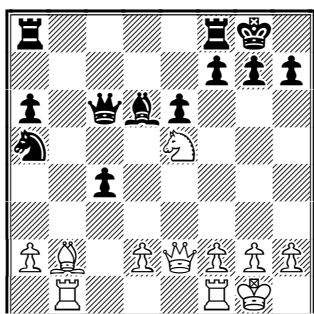
18.♗c2 ♙d6 (D)



19. ♖b4!?

Creative! Black's possible idea was ...♗f4; also, White had some long-term structural problems: his "bad bishop", and his pawns fixed on c3 and d2. So, Finkel simply gives up the c3 pawn, to open up the a1–h8 diagonal.

19... ♗xb4 20. cxb4 ♕xb4 21. ♖b1 ♕d6 22. ♕b2 0–0 23. ♗e5 (D)



As a result, White obtains good activity for the sacrificed pawn, Black is still only slightly better. 23... ♖c7 24. ♕c3 ♕xe5

Or 24... ♗c6! 25. ♗xc4 ♕xh2+ 26. ♖h1, with certain compensation.

25. ♕xe5

A more standard decision would be to exchange queens: 25. ♖xe5! ♖xe5 26. ♕xe5, and am not sure that Black has real winning chances... Rook + bishop are stronger than rook + knight, but queen + bishop are weaker than queen + knight. That's a general rule, and that is probably reason enough to think that Black may not be able to win with his extra pawn. 25... ♖c5 26. ♖fc1 ♖ac8 27. ♕a1 ♖fd8

Black's winning chances have slightly increased, but here, the factor of time probably started to tell.

28. h4 ♖d5 29. ♖c2 ♖d3?

Simply loosing his extra pawn. 30. ♖e5 f6

30... ♖g6? 31. h5! ♖h6 32. ♖xa5+- was the point.

31. ♖xe6+ ♖h8 32. ♖bc1 ♖c6 33. ♖e7 ♖cd6 34. ♖c7 ♖d5 35. ♕c3 ♗c6 = 1/2–1/2

Contact information. Do you want to report a tournament or have a suggestion concerning Chess Today? E-mail us at ct@gmsquare.com. We always appreciate your comments and feedback!

Please tell your chess friends about Chess Today. Feel free to send them our newspaper to sample – with more readers the price will go down, while the quality will go up!

Chess Today is published by: Alexander Baburin, 3 Eagle Hill, Blackrock, Co. Dublin, Ireland. Tel:

(353–1) 278–2276. Fax/phone: (353–1) 283–6839. E-mail: ct@gmsquare.com

Website: <http://www.chesstoday.net/>

Editors: GM Alexander Baburin, GM Ruslan Scherbakov, IM Vladimir Barsky, GM Mikhail Golubev, IM Maxim Notkin.

Technical editors: Graham Brown and Ralph P. Marconi.

Chess Today is copyright 2002 by Alexander Baburin and protected intellectual property under the International Copyright convention. Any unauthorised reproduction, via print, electronic format, or in any form whatsoever is strictly prohibited without express written permission.